

Position and direction of the camera

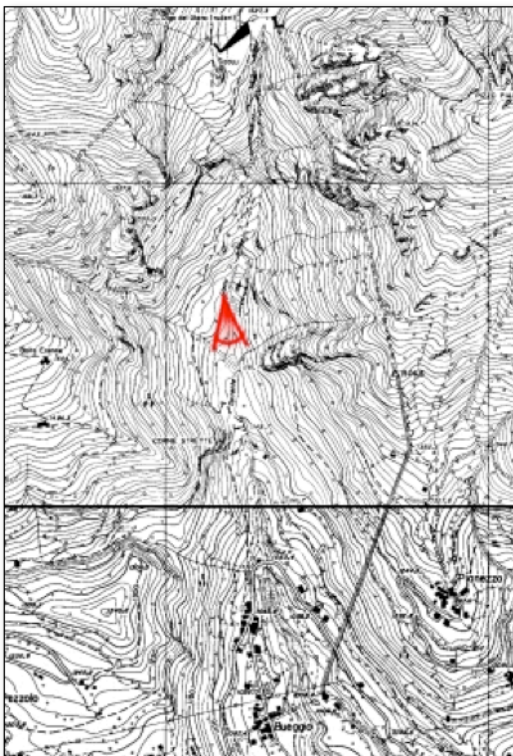


Picture



Picture of USGS used for the comparison

$$K_s = 18.9 - 12.7 \text{ s}^{-1} \text{ m}^{1/3}.$$



Position and direction of the camera

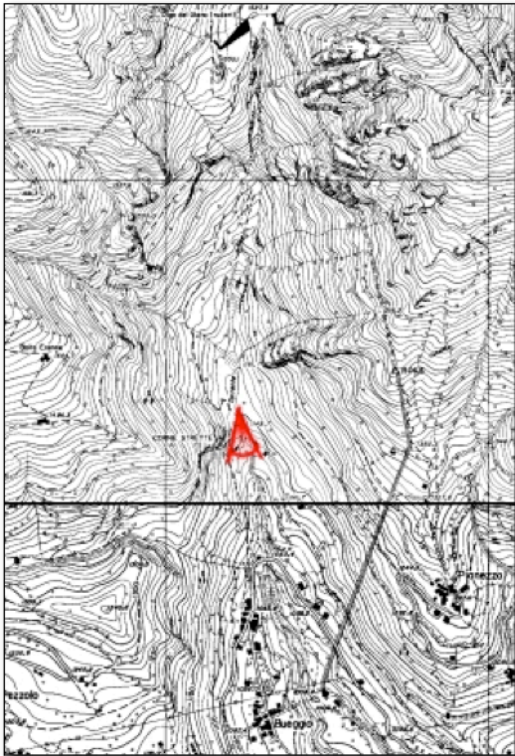


Picture



Picture of USGS used for the comparison

$$K_s = 18.9 - 12.7 \text{ s}^{-1} \text{ m}^{1/3}.$$



Position and direction of the camera

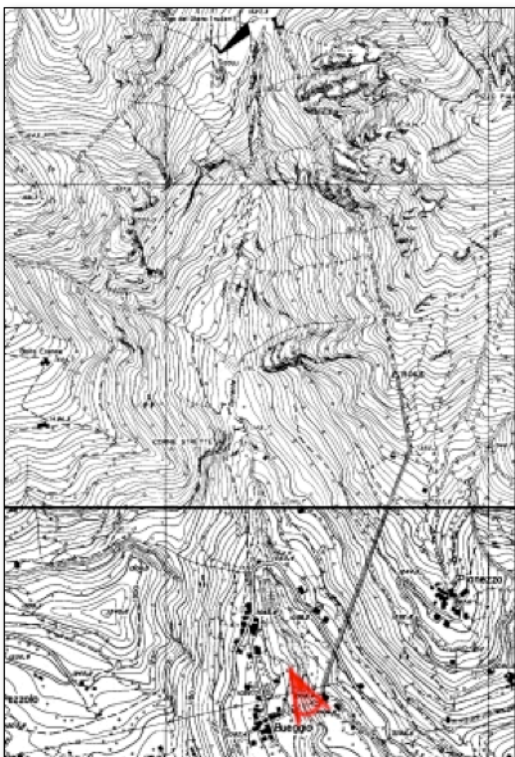


Picture



Picture of USGS used for the comparison.

$$Ks = 18.9 - 12.7 \text{ s}^{-1}\text{m}^{1/3}.$$



Position and direction of the camera

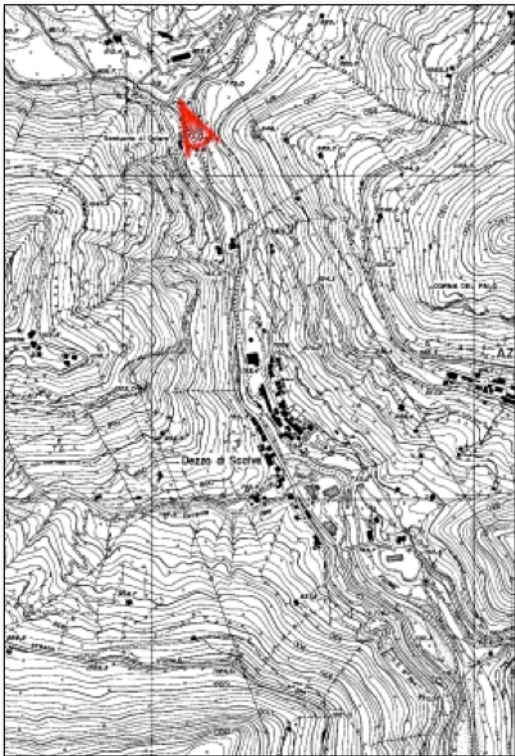


Picture



Picture of USGS used for the comparison.

$$Ks = 13.7 \text{ s}^{-1}\text{m}^{1/3}.$$



Position and direction of the camera

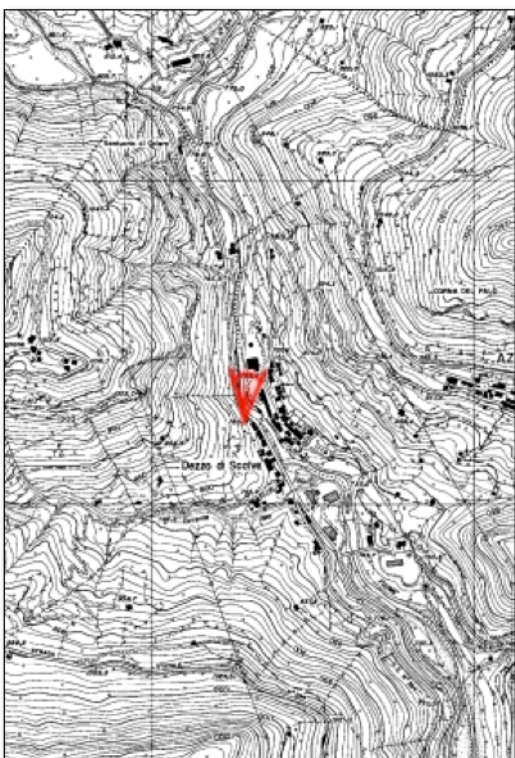


Picture



Picture of USGS used for the comparison.

$$Ks = 15.4 \text{ s}^{-1}\text{m}^{1/3}.$$



Position and direction of the camera



Picture



Picture of USGS used for the comparison

$$Ks = 22.2 - 13.7 \text{ s}^{-1}\text{m}^{1/3}.$$



Position and direction of the camera



Picture



Picture of USGS used for the comparison

$$Ks = 17.5 \text{ s}^{-1}\text{m}^{1/3}.$$



Position and direction of the camera



Picture



Picture of USGS used for the comparison

$$Ks = 18.9 - 12.7 \text{ s}^{-1}\text{m}^{1/3}.$$



Position and direction of the camera



Picture



Picture of USGS used for the comparison

$$Ks = 20 \text{ s}^{-1}\text{m}^{1/3}.$$